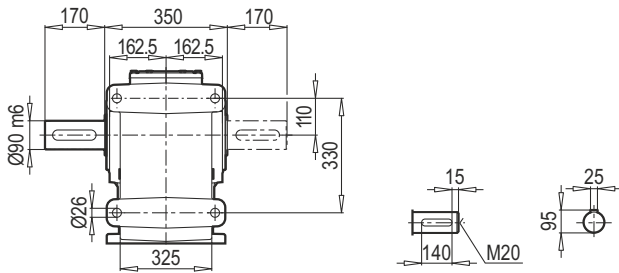
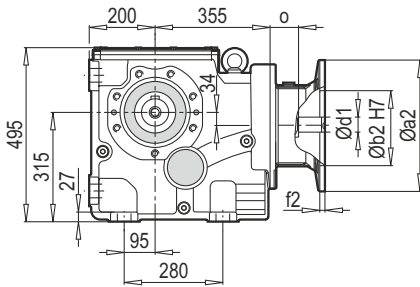


Typ / Type / Tipo / Type / Tipo	iges	4-pol. 50Hz 1400rpm n ₂ [min ⁻¹]	M _{amax} f _B =1 4 - pol. [Nm]	P _{1max} W f _B ≥ 1				PAM - IEC						
				4 - pol. 1400rpm [kW]	FR1 [kN]	FR2 (M) [kN]	FR2 (D,KS) [kN]	f _B ⇒ 45 - 86						
K90390 W 100 + PAM - IEC 100	168.56	8.3	8000	7.73	9.6	65.0	65.0	132	160	180				
	152.10	9.3	8000	8.62	9.5	65.0	65.0	132	160	180				
	136.87	10.2	8000	9.52	9.5	65.0	65.0	132	160	180				
	126.23	11.1	8000	10.32	9.4	65.0	65.0	132	160	180				
	105.17	13.3	8000	12.39	9.4	65.0	65.0	132	160	180	200	225		
	94.90	14.8	8000	13.73	9.3	65.0	65.0	132	160	180	200	225		
	88.87	15.8	8000	14.66	9.3	65.0	65.0	132	160	180				
	85.54	16.4	8000	15.23	9.2	65.0	65.0	132	160	180				
	78.76	17.8	8000	16.54	9.2	64.1	64.1	132	160	180	200	225		
	72.16	19.4	8000	18.06	9.1	62.1	62.1	132	160	180				
	64.83	21.6	8000	20.10	9.0	59.4	59.4	132	160	180	200	225		
	62.21	22.5	8000	20.95	9.0	58.4	58.4	132	160	180	200	225		
	58.50	23.9	8000	22.27	8.9	57.0	57.0	132	160	180	200	225		
	55.45	25.2	8000	23.50	8.9	55.9	55.9	132	160	180	200	225		
	51.63	27.1	8000	25.24	8.8	54.2	54.2	132	160	180	200	225		
	48.55	28.8	8000	26.84	8.8	52.9	52.9	132	160	180	200	225		
	42.94	32.6	8000	30.35	8.6	50.5	50.5	132	160	180	200	225		
	39.74	35.2	8000	32.79	8.5	48.7	48.7		160	180	200	225		
	35.85	39.1	8000	36.35	8.4	46.7	46.7		160	180	200	225		
	34.18	41.0	8000	38.12	8.3	45.9	45.9	132	160	180	200	225		
	30.84	45.4	8000	42.25	8.1	44.0	44.0	132	160	180	200	225		
	28.71	48.8	8000	45.39	8.0	42.7	42.7	132	160	180	200	225		
	25.60	54.7	6800	43.27	8.1	42.4	42.4	132	160	180	200	225		
	24.50	57.1	6700	44.54	8.0	41.7	41.7		160	180	200	225		
	20.95	66.8	6500	50.54	7.8	39.5	39.5		160	180	200	225		
	18.90	74.1	6000	51.71	7.7	38.6	38.6		160	180	200	225		
	15.69	89.2	5000	51.91	7.7	37.2	37.2		160	180	200	225		
	14.32	97.8	5000	56.87	7.5	35.9	35.9		160	180	200	225		
	12.92	108.5	4500	56.73	7.5	35.1	35.1		160	180	200	225		
	10.72	130.6	4500	68.38	7.0	32.7	32.7		160	180	200	225		

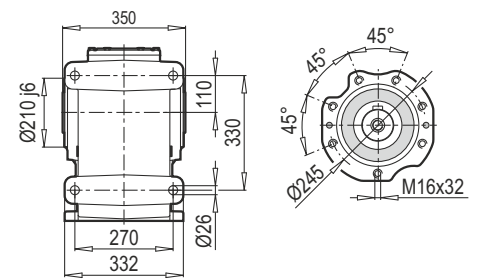
TMA - ÇMA / B14



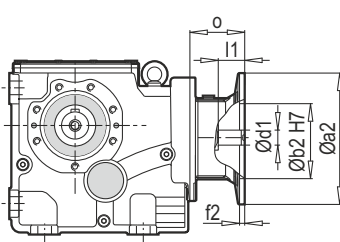
K 90390 PAM B5/B14



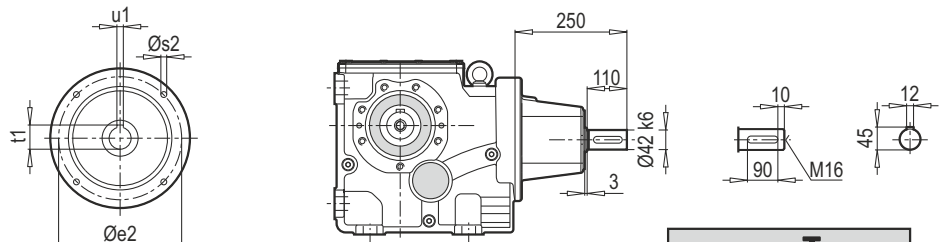
DA / B14



K 90390 PAM B5/B14

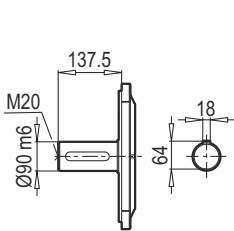


K 90390 W

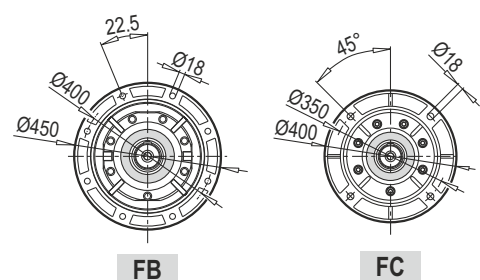
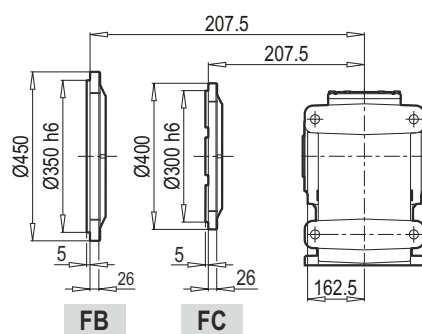


W ~ Kg	
K 90390	216.5

TMA / B5



DG / B5



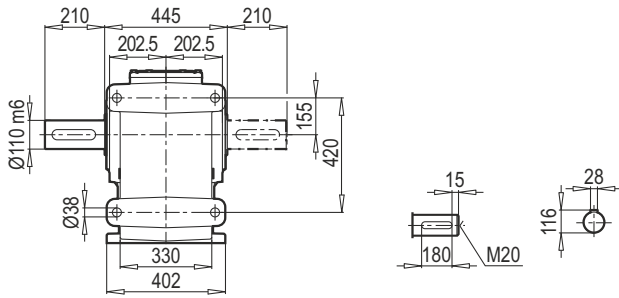
Typ / Type / Tipo Type / Tipo	PAM B5	Øa2	Øb2	Øe2	f2	Øs2	Ød1	l1	t1	u1	o
K 90390	132	300	230	265	5.5	12	38	82	41.3	10	76
	160	350	250	300	7	16	42	112	45.3	12	124
	180	350	250	300	7	16	48	112	51.8	14	124
	200	400	300	350	7	16	55	112	59.3	16	161
	225	450	350	400	7	16	60	142	64.4	18	161

~ Kg	
PAM B5	K 90390
132	203.5
160	211.5
180	211.5
200	226.5
225	229.5

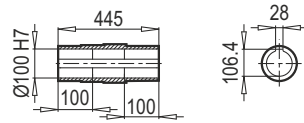
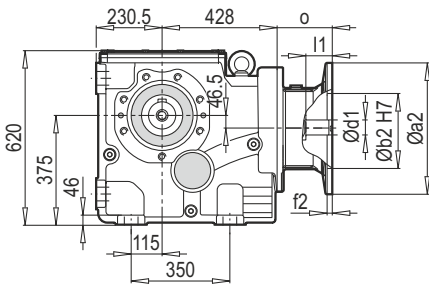
Typ / Type / Tipo Type / Tipo	PAM B14	Øa2	Øb2	Øe2	f2	Øs2	Ød1	l1	t1	u1	o
K 90390	132	200	130	165	3.5	11	38	82	41.3	10	76

~ Kg	
PAM B14	K 90390
132	197

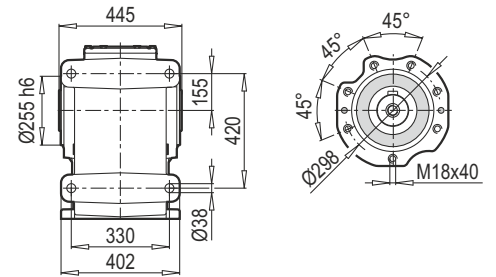
TMA - ÇMA / B14



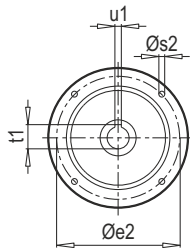
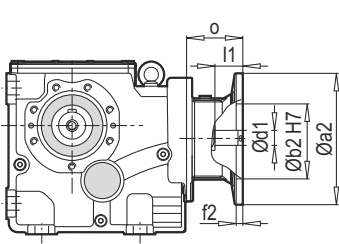
K 100390 PAM B5/B14



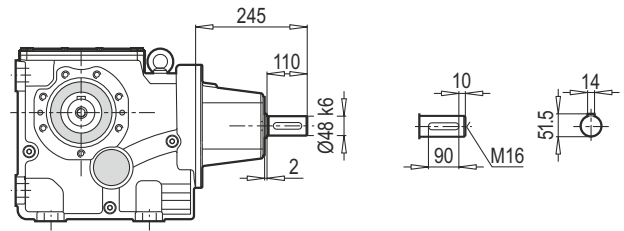
DA / B14



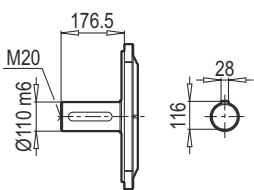
K 100390 PAM B5/B14



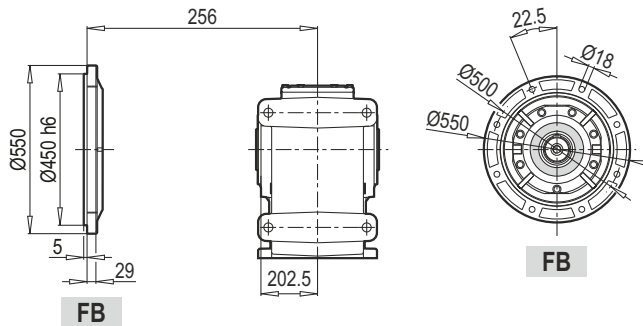
K 100390 W



TMA / B5



DA / B5



W ~ Kg	
K 100390	460

Typ / Type / Tipo Type / Tipo	PAM B5	Øa2	Øb2	Øe2	f2	Øs2	Ød1	l1	t1	u1	o
K 100390	160	350	250	300	7	16	42	112	45.3	12	109
	180	350	250	300	7	16	48	112	51.8	14	109
	200	400	300	350	7	16	55	112	59.3	16	146
	225	450	350	400	7	16	60	142	64.4	18	146
	250	550	450	500	7	16	65	142	69.4	18	175
	280	550	450	500	7	16	75	142	79.9	20	175

~ Kg	
PAM B5	K 100390
160	390
180	390
200	455
225	461
250	480
280	480