




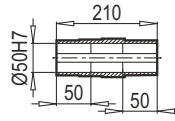
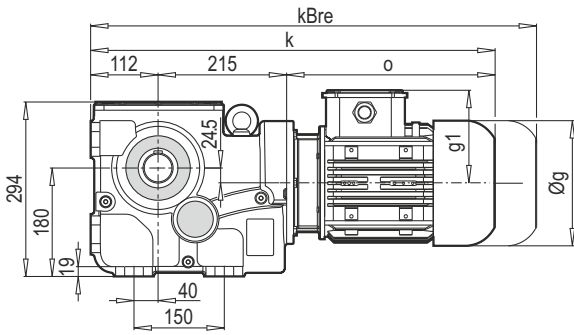
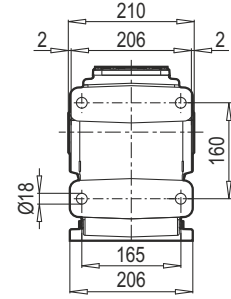


Typ / Type / Tipo / Type / Tipo	iges	4-pol. 50Hz 1400rpm n ₂ [min ⁻¹]	M _{amax} f _B =1 4 - pol. [Nm]	P _{1max} W f _B ≥ 1				PAM - IEC						
				4 - pol. 1400rpm [kW]	FR1 [kN]	FR2 (M) [kN]	FR2 (D,KS) [kN]	f _B ⇒  45 - 86						
K50390	161.23	8.7	1800	1.82	2.8	22.0	11.8	80	90	100	112			
	141.14	9.9	1800	2.08	2.7	22.0	11.2	80	90	100	112			
	129.64	10.8	1800	2.26	2.7	22.0	10.9	80	90	100	112			
	W 	117.49	11.9	1800	2.50	2.7	22.0	10.5	80	90	100	112		
	 95	111.93	12.5	1800	2.62	2.7	22.0	10.3	80	90	100	112	132	
		102.86	13.6	1800	2.85	2.7	22.0	10.0	80	90	100	112		
	+	90.00	15.6	1800	3.26	2.6	22.0	9.5	80	90	100	112	132	
	PAM - IEC	81.57	17.2	1800	3.59	2.6	22.0	9.1	80	90	100	112	132	
		76.87	18.2	1700	3.60	2.6	22.0	9.0	80	90	100	112	132	
	 95	70.84	19.8	1700	3.91	2.5	22.0	8.7	80	90	100	112	132	
		66.83	20.9	1700	4.14	2.5	22.0	8.5	80	90	100	112	132	
		63.93	21.9	1700	4.33	2.5	22.0	8.3	80	90	100	112	132	
		56.96	24.6	1700	4.86	2.4	22.0	8.0	80	90	100	112	132	
		51.63	27.1	1700	5.36	2.4	22.0	7.7	80	90	100	112	132	
		48.89	28.6	1700	5.66	2.3	22.0	7.6	80	90	100	112	132	
		46.59	30.0	1700	5.94	2.3	22.0	7.4	80	90	100	112	132	
		43.91	31.9	1700	6.31	2.2	22.0	7.2	80	90	100	112	132	
		40.46	34.6	1700	6.84	2.2	22.0	7.0	80	90	100	112	132	
		35.30	39.7	1700	7.84	2.1	22.0	6.6	80	90	100	112	132	
		32.54	43.0	1700	8.51	2.0	22.0	6.4	80	90	100	112	132	
		29.67	47.2	1600	8.78	2.0	22.0	6.3	80	90	100	112	132	160
		25.65	54.6	1500	9.53	1.9	21.1	6.0	80	90	100	112	132	160
		23.26	60.2	1400	9.80	1.8	20.4	5.8	80	90	100	112	132	160
		18.70	74.9	1400	12.19	1.6	18.7	5.3	80	90	100	112	132	160
		16.95	82.6	1400	13.45	1.4	18.0	5.1	80	90	100	112	132	160
		14.65	95.6	1200	13.34	1.4	17.6	5.0	80	90	100	112	132	160
		11.78	118.8	1000	13.83	1.4	16.7	4.8	80	90	100	112	132	160
		10.68	131.1	1000	15.25	1.2	16.1	4.6	80	90	100	112	132	160
		8.98	156.0	900	16.32	1.0	15.1	4.3	80	90	100	112	132	160
		8.13	172.1	800	16.03	1.1	14.9	4.2	80	90	100	112	132	160

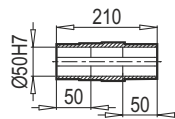
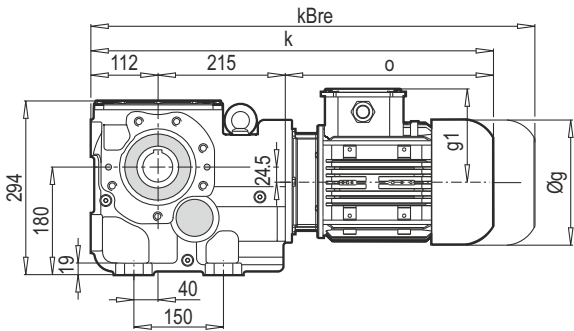
K 50390



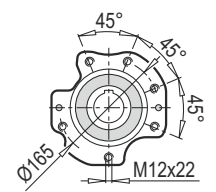
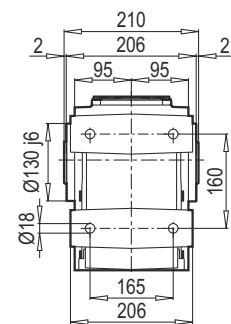
DA



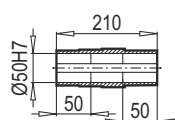
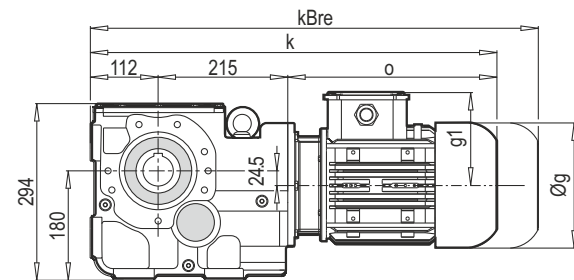
K 50390



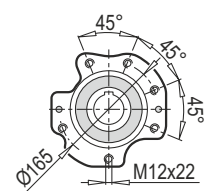
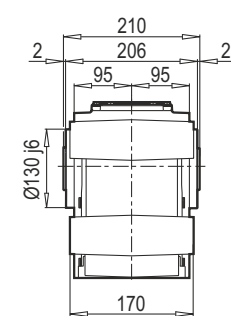
DA / B14



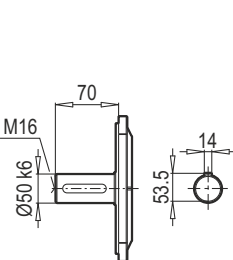
K 50390



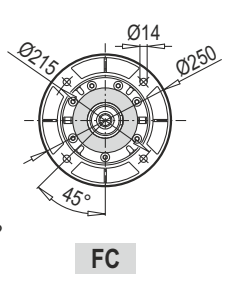
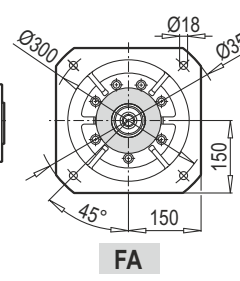
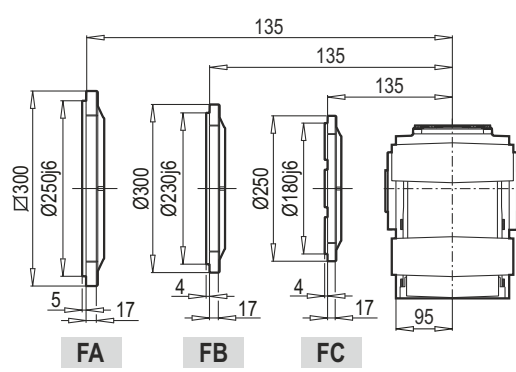
DG / B14



TMG / B5

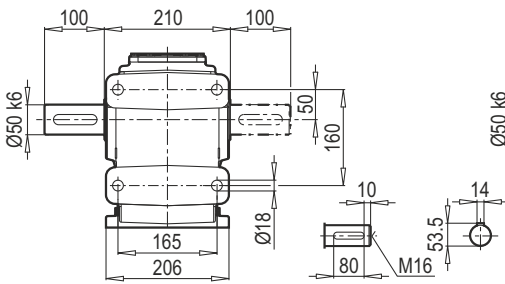


DG / B5

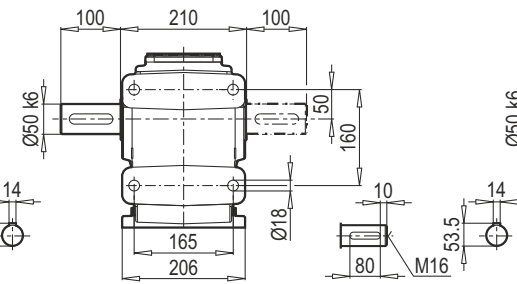


	80M	90S	90L	100L	112M	132S	132M	160M/L
g	159	193	193	217	232	279	279	323
g1	127	151	151	160	168	182	182	200
k	574	620	640	663	716	723	758	845
kBre	636	693	713	744	796	831	899	997
o	247	293	313	336	389	396	431	518

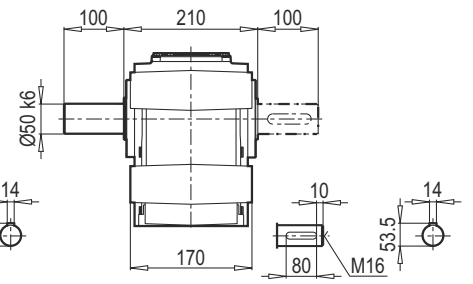
TMA - ÇMA



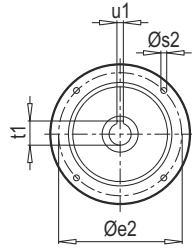
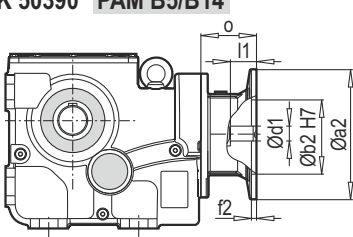
TMA - ÇMA / B14



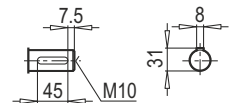
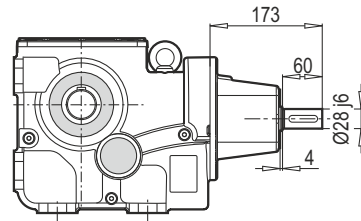
TMG - ÇMG / B14



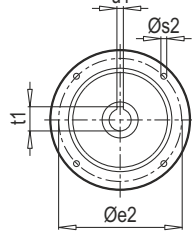
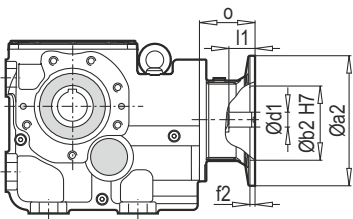
K 50390 PAM B5/B14



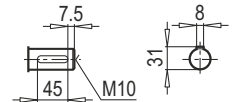
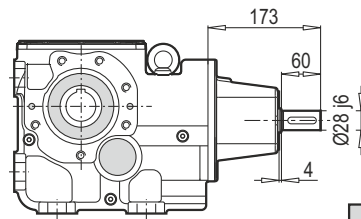
K 50390 W



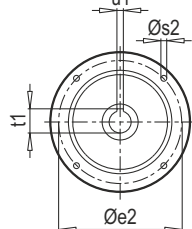
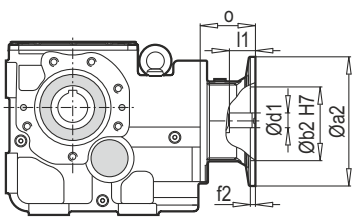
K 50390 PAM B5/B14



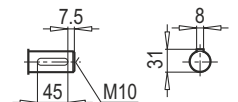
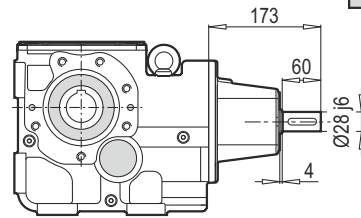
K 50390 W



K 50390 PAM B5/B14



K 50390 W



W ~ Kg	
K 50390	61

Typ / Type / Tipo Type / Tipo	PAM B5	Øa2	Øb2	Øe2	f2	Øs2	Ød1	l1	t1	u1	o
K 50390	80	200	130	165	5	10	19	42	21.8	6	70
	90	200	130	165	5	10	24	52	27.3	8	70
	100	250	180	215	5.5	12	28	62	31.3	8	85
	112	250	180	215	5.5	12	28	62	31.3	8	85
	132	300	230	265	5.5	12	38	82	41.3	10	110
	160	350	250	300	7	16	42	112	45.3	12	158

~ Kg	
PAM B5	K 50390
80	59
90	59
100	61
112	61
132	65
160	72

Typ / Type / Tipo Type / Tipo	PAM B14	Øa2	Øb2	Øe2	f2	Øs2	Ød1	l1	t1	u1	o
K 50390	80	120	80	100	3	7	19	42	21.8	6	70
	90	140	95	115	3	9	24	52	27.3	8	70
	100	160	110	130	3.5	9	28	62	31.3	8	85
	112	160	110	130	3.5	9	28	62	31.3	8	85
	132	200	130	165	3.5	11	38	82	41.3	10	110

~ Kg	
PAM B14	K 50390
80	55
90	55
100	57
112	57
132	62