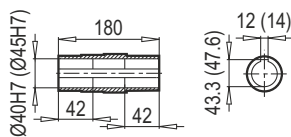
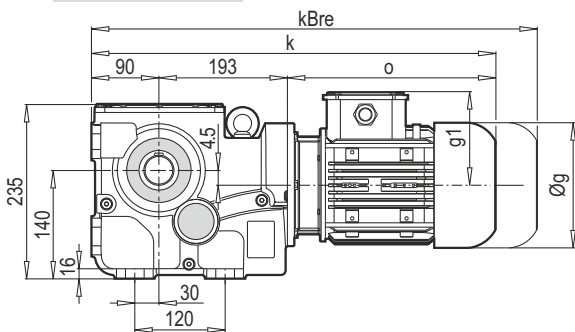
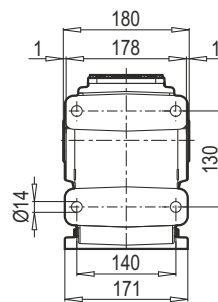


Typ / Type / Tipo / Type / Tipo	iges	4-pol. 50Hz 1400rpm n ₂ [min ⁻¹]	M _{amax} f _B =1 4 - pol. [Nm]	P _{1max} W f _B ≥ 1				PAM - IEC					
				4 - pol. 1400rpm [kW]	FR1 [kN]	FR2 (M) [kN]	FR2 (D,KS) [kN]	f _B ⇒ 45 - 86					
K40390 W 93 + PAM - IEC mm 93	142.18	9.8	850	0.97	2.5	18.0	9.5	80	90	100	112		
	124.46	11.2	850	1.11	2.5	18.0	9.1	80	90	100	112		
	114.17	12.3	850	1.21	2.5	18.0	8.8	80	90	100	112		
	103.40	13.5	850	1.34	2.5	18.0	8.5	80	90	100	112		
	98.70	14.2	850	1.40	2.5	18.0	8.3	80	90	100	112	132	
	90.52	15.5	850	1.53	2.5	18.0	8.1	80	90	100	112		
	79.26	17.7	850	1.75	2.5	18.0	7.7	80	90	100	112	132	
	71.78	19.5	850	1.93	2.5	18.0	7.4	80	90	100	112	132	
	67.78	20.7	850	2.04	2.5	18.0	7.2	80	90	100	112	132	
	62.47	22.4	850	2.22	2.5	18.0	7.0	80	90	100	112	132	
	58.81	23.8	850	2.35	2.5	18.0	6.9	80	90	100	112	132	
	54.43	25.7	850	2.54	2.5	18.0	6.7	80	90	100	112	132	
	50.17	27.9	850	2.76	2.5	18.0	6.5	80	90	100	112	132	
	44.78	31.3	850	3.09	2.5	18.0	6.2	80	90	100	112	132	
	42.28	33.1	850	3.27	2.5	18.0	6.0	80	90	100	112	132	
	38.97	35.9	850	3.55	2.5	18.0	5.9	80	90	100	112	132	
	33.95	41.2	850	4.08	2.5	18.0	5.5	80	90	100	112	132	
	31.29	44.7	850	4.42	2.5	18.0	5.4	80	90	100	112	132	
	28.83	48.6	850	4.80	2.4	18.0	5.2	80	90	100	112	132	
	26.11	53.6	850	5.30	2.3	17.6	5.0	80	90	100	112	132	
22.40	62.5	850	6.18	2.2	16.5	4.7	80	90	100	112	132		
17.98	77.8	850	7.70	2.0	15.1	4.3	80	90	100	112	132		
16.29	86.0	850	8.50	1.9	14.5	4.1	80	90	100	112	132		
14.11	99.2	810	9.35	1.8	13.9	4.0	80	90	100	112	132		
11.33	123.6	750	10.78	1.7	12.9	3.7	80	90	100	112	132		
10.26	136.4	650	10.32	1.7	12.8	3.7	80	90	100	112	132		
8.63	162.2	600	11.32	1.6	12.0	3.4	80	90	100	112	132		
7.82	179.1	500	10.41	1.7	12.0	3.4	80	90	100	112	132		

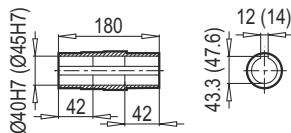
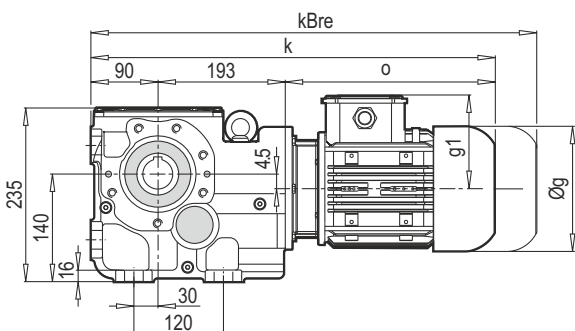
K 40390



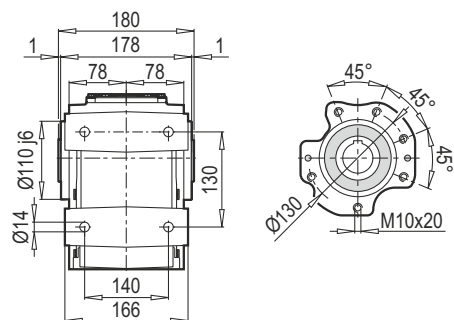
DA



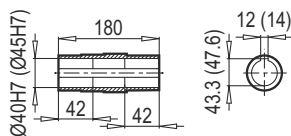
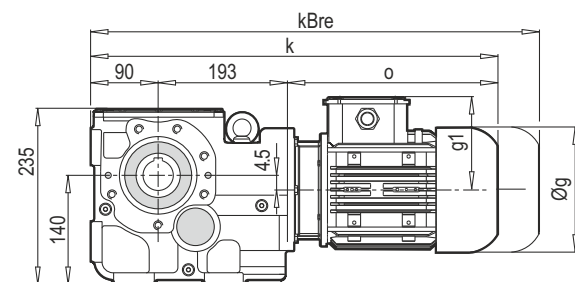
K 40390



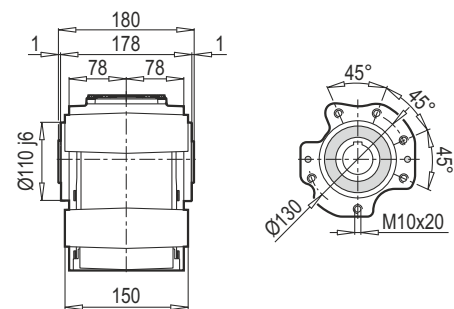
DA / B14



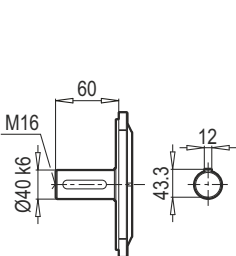
K 40390



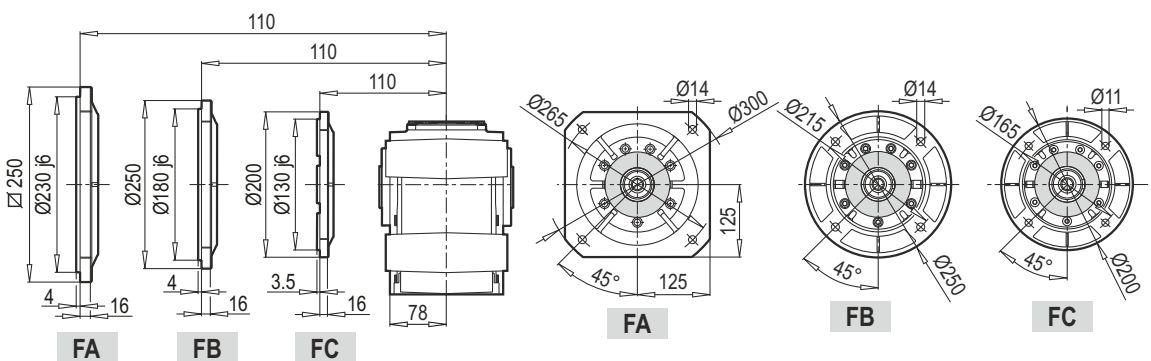
DG / B14



TMG / B5

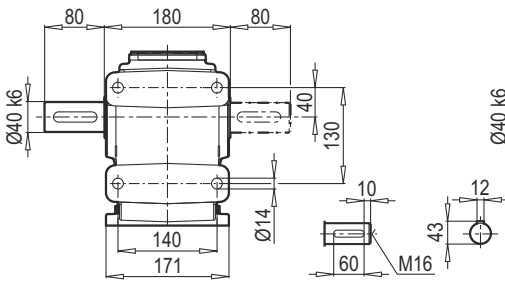


DG / B5

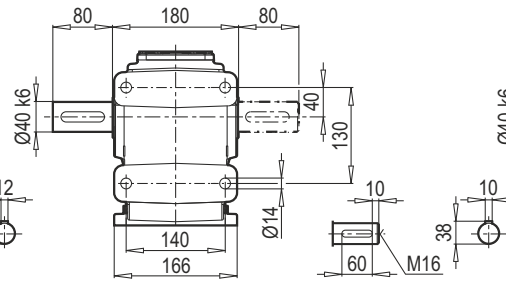


	80M	90S	90L	100L	112M	132S	132M	160M
g	159	193	193	217	232	279	279	323
g1	127	151	151	160	168	182	182	200
k	530	576	596	619	672	679	714	801
kBre	592	649	669	700	752	787	855	953
o	247	293	313	336	389	396	431	518

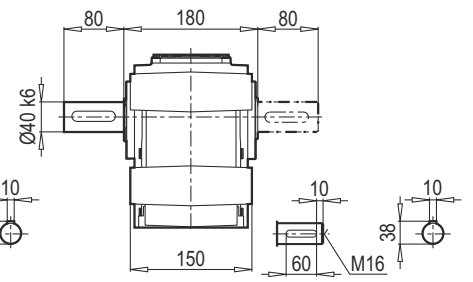
TMA - ÇMA



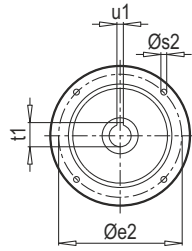
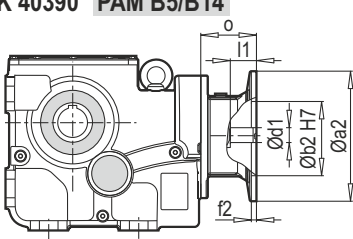
TMA - ÇMA / B14



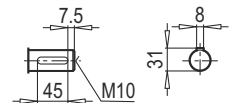
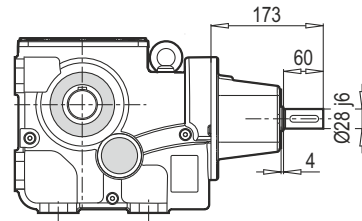
TMG - ÇMG / B14



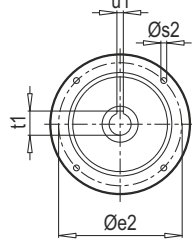
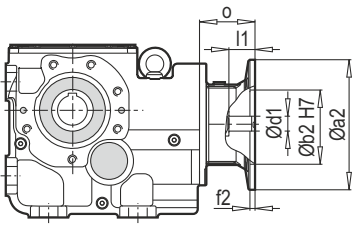
K 40390 PAM B5/B14



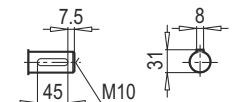
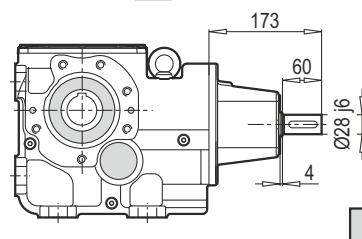
K 40390 W



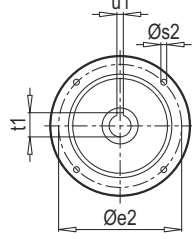
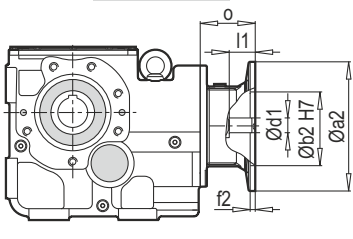
K 40390 PAM B5/B14



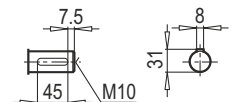
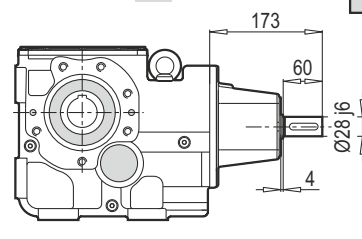
K 40390 W



K 40390 PAM B5/B14



K 40390 W



W ~ Kg	
K40390	35

Typ / Type / Tipo Type / Tipo	PAM B5	Øa2	Øb2	Øe2	f2	Øs2	Ød1	l1	t1	u1	o
90	200	130	165	5	10	24	52	27.3	8	70	
100	250	180	215	5.5	12	28	62	31.3	8	85	
112	250	180	215	5.5	12	28	62	41.3	8	85	
132	300	230	265	5.5	12	38	82	31.3	10	110	

~ Kg	
PAM B5	K 40390
80	33
90	33
100	35
112	35
132	39

Typ / Type / Tipo Type / Tipo	PAM B14	Øa2	Øb2	Øe2	f2	Øs2	Ød1	l1	t1	u1	o
90	140	95	115	3	9	24	52	27.3	8	70	
100	160	110	130	3.5	9	28	62	31.3	8	85	
112	160	110	130	3.5	9	28	62	31.3	8	85	
132	200	130	165	3.5	11	38	82	41.3	10	110	

~ Kg	
PAM B14	K 40390
80	29
90	29
100	31
112	31
132	36